

la sécurité
 thermique
 hautes
 performances

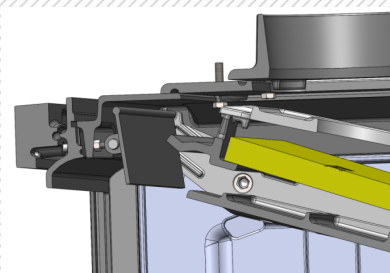
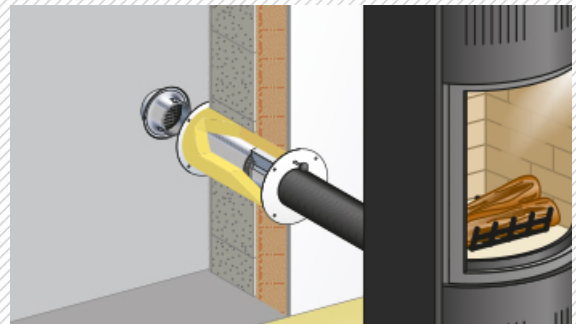
high
 performance
 thermal
 safety

Thermal actuators for chimney/stove



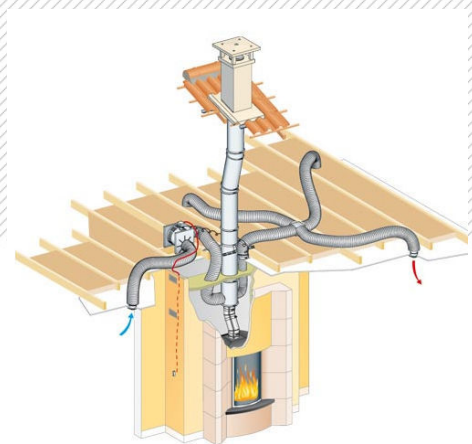
When mounted on the **exhaust** of open fireplace, a flap (generally manual) is here to regulate the power of the fire, and to insulate the house from the cold, when the fire is extinguished.

An **input air-pipe** is necessary at the bottom of the fireplace, to provide fresh air from outside, as fire propellant. This pipe needs to be closed when no fire, in order to prevent from uncomfortable airstream in the house.

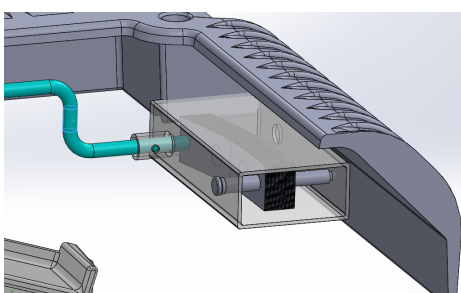


Smoke deviation: some modern chimney inserts are equipped with a manually actuated flap on top of the fire, in order to force the smoke to be double-burnt. This allows less polluting particles to escape in the atmosphere.

Hot air outlets are sometimes installed along the chimney duct, to warm-up different places of the house. The temperature of this supplied air can be adjustable, by mixing hot air with outside cold air.



DELTA CONCEPT develops sub-assemblies, using thermo-bimetal technology, in order to have all these functions **automatic and energy-autonomous**.



Bimetal technology advantages :

- ✓ Can be used as both thermal-sensor and actuator.
- ✓ Simple and low cost.
- ✓ No need of electric power.
- ✓ Reliable and sustainable.

